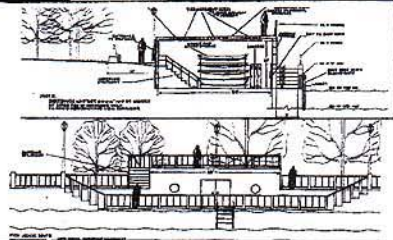


# Newtown Creek



**Signe Neilsen Streetend Park Plan**  
Keith Rodan suggested this plan to Brooklyn Waterfront Committee Chair and Members and other interested parties. This is a plan for a park that will be built at the end of Manhattan Avenue. This park will be used by community boaters and will provide storage for small vessels.



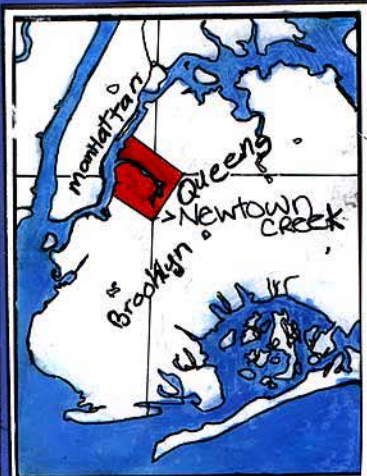
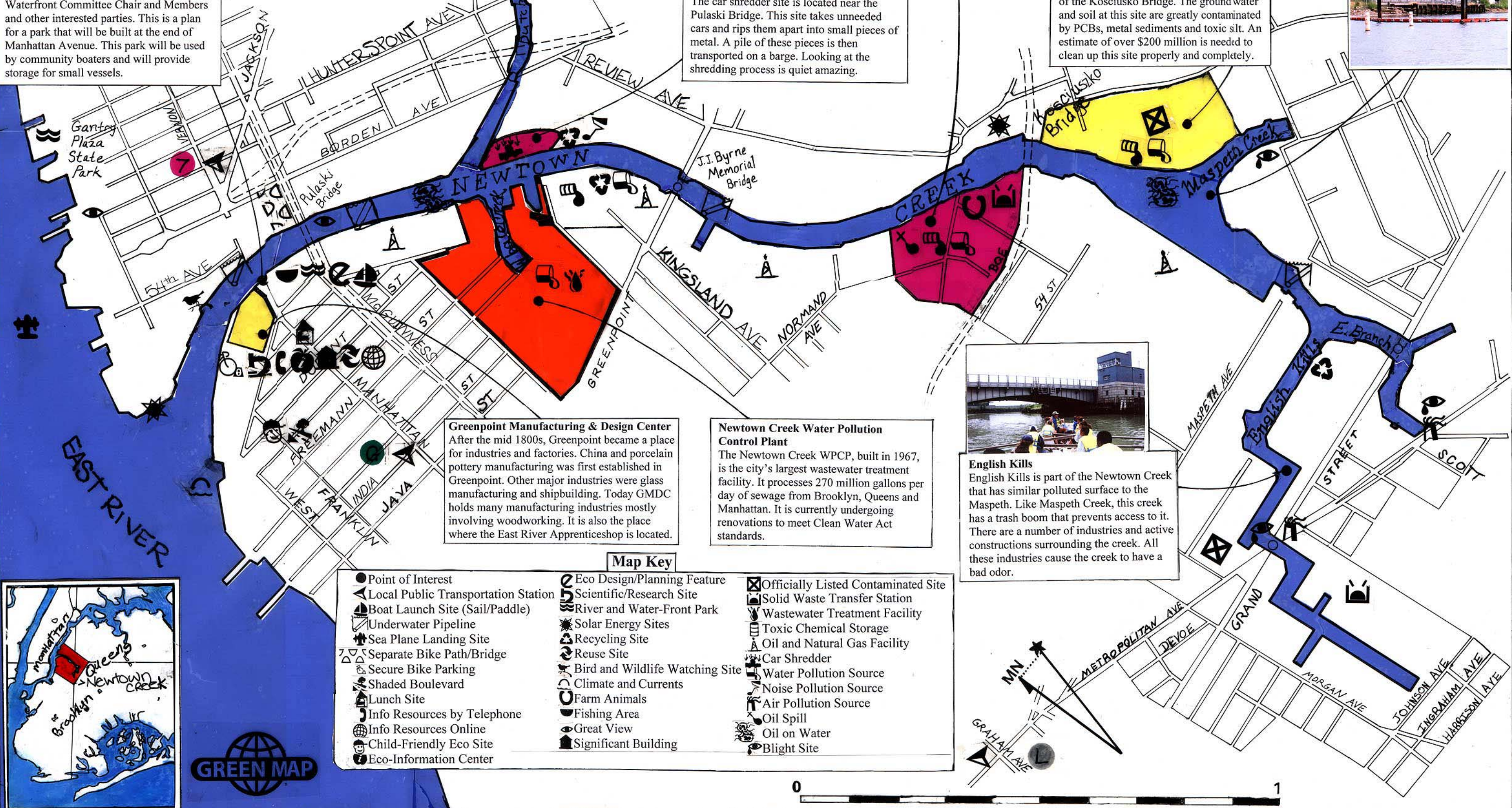
**Car Shredder**  
The car shredder site is located near the Pulaski Bridge. This site takes unneeded cars and rips them apart into small pieces of metal. A pile of these pieces is then transported on a barge. Looking at the shredding process is quiet amazing.

**Exxon-Mobil**  
The Exxon-Mobil site is one of the largest polluting sites in Greenpoint. It was since the 1950s that a spill of oil has been leaking into Newtown Creek. Toxins such as PAHs, PCBs, mercury, and cadmium have been tested from a ground water remediation pipe from Exxon-Mobil.

**Maspeth Creek**  
Maspeth Creek is the most polluted part of the creek. Maspeth Creek is 1/2 mile long. The creek has a brownish-green surface color and has an oily surface. A long boom is placed at the south of Maspeth where it meets with Newtown Creek to prevent trash flow into the creek.



**The Phelps-Dodge Superfund Site**  
This site is a large lot located at the east side of the Kosciusko Bridge. The ground water and soil at this site are greatly contaminated by PCBs, metal sediments and toxic silt. An estimate of over \$200 million is needed to clean up this site properly and completely.



**Greenpoint Manufacturing & Design Center**  
After the mid 1800s, Greenpoint became a place for industries and factories. China and porcelain pottery manufacturing was first established in Greenpoint. Other major industries were glass manufacturing and shipbuilding. Today GMDC holds many manufacturing industries mostly involving woodworking. It is also the place where the East River Apprenticeship is located.

**Newtown Creek Water Pollution Control Plant**  
The Newtown Creek WPCP, built in 1967, is the city's largest wastewater treatment facility. It processes 270 million gallons per day of sewage from Brooklyn, Queens and Manhattan. It is currently undergoing renovations to meet Clean Water Act standards.



**English Kills**  
English Kills is part of the Newtown Creek that has similar polluted surface to the Maspeth. Like Maspeth Creek, this creek has a trash boom that prevents access to it. There are a number of industries and active constructions surrounding the creek. All these industries cause the creek to have a bad odor.

**Map Key**

● Point of Interest	🌿 Eco Design/Planning Feature	☒ Officially Listed Contaminated Site
🚏 Local Public Transportation Station	🔬 Scientific/Research Site	🗑️ Solid Waste Transfer Station
🚤 Boat Launch Site (Sail/Paddle)	🌊 River and Water-Front Park	🏭 Wastewater Treatment Facility
🔌 Underwater Pipeline	☀️ Solar Energy Sites	🛢️ Toxic Chemical Storage
✈️ Sea Plane Landing Site	♻️ Recycling Site	🛢️ Oil and Natural Gas Facility
🚲 Separate Bike Path/Bridge	♻️ Reuse Site	🚗 Car Shredder
🔒 Secure Bike Parking	🐦 Bird and Wildlife Watching Site	🌊 Water Pollution Source
🌳 Shaded Boulevard	🌍 Climate and Currents	🔊 Noise Pollution Source
📞 Info Resources by Telephone	🐾 Farm Animals	🛢️ Air Pollution Source
🌐 Info Resources Online	🎣 Fishing Area	🛢️ Oil Spill
👶 Child-Friendly Eco Site	🏠 Great View	🛢️ Oil on Water
📡 Eco-Information Center	🏢 Significant Building	🏠 Blight Site

